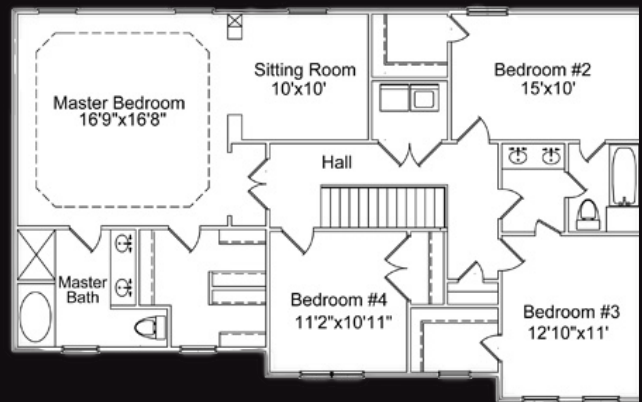
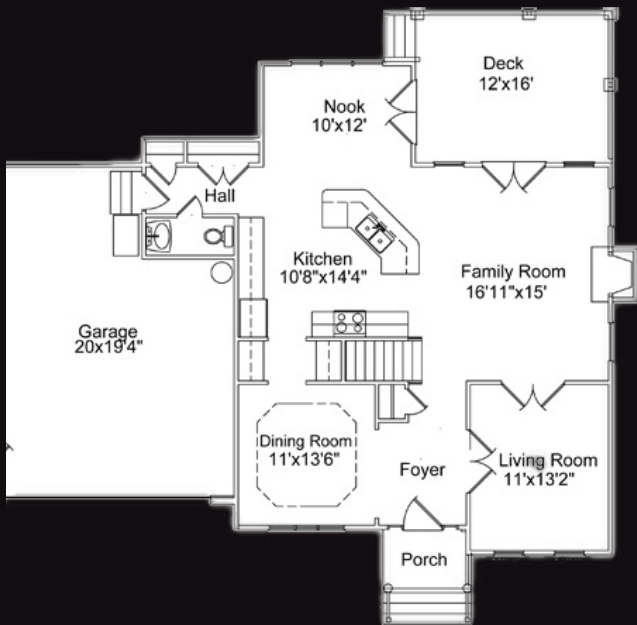




**FINER**  
H O M E S

*The Sterling*

2,602 sq ft | Four Bedrooms | Two and a Half Baths | Two Car Garage



\* Home plans may vary or change without notice or obligation. Optional items are available at additional cost. All dimensions are approximate and not all features are shown. Actual building plans may include code updates and design/mechanical changes and improvements.



**YEATMAN**

GROUP

www.finerhomesinc.net | 804.NEW.HOME | sales@theyeatmangroup.com

